

# HORIZONTAL BED HEAD PANEL





## Horizontal Bed Head Panel



### Description

PTL's horizontal bed head panels are a wall mounted bed head units pleasantly designed for general patient wards, recovery, and other low level critical care applications.

It offers the hospital planning staff opportunity to specify at time of order the type, quantity and placement of outlets to suit individual requirements.

The complete assembly is housed in a patented mounting system to minimize installation time and provides project cost savings.

All units contain integral, separate compartments for low voltage cabling, extra low voltage cabling and medical gas pipework.

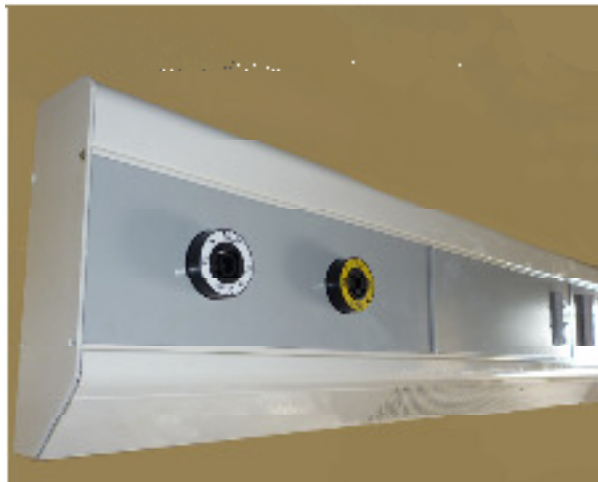
Other ancillary equipment, such as monitor shelves, equipments rails, support arms, data sockets, nurse call systems, etc. can be incorporated as required.

### Designed to meet the requirements of ;

HTM 02-01 / 2022 - Medical Gas Pipeline system  
C11-NHS Estates Model Engineering Specification  
HTM 2020-Electrical Safety Low Voltage System  
EN737-3:1998-Medical Gas Pipeline System

## Key Features :

- Patented mounting system minimizes installation time and provides project cost savings.
- Integrated indirect and reading light (optional)
- Separate equipment rails that are independently mounted, as such equipment can be placed at the right place.
- All units contain integral, separate compartments for low voltage cabling, extra low voltage cabling and medical gas pipe work.
- Medical gas section is adequately ventilated, via holes or cut outs on the structural back plate edge.
- Standard finish white epoxy coated paint. Other colour variations.



### Recommendation elevation:

With lighting : 1600- 1700 mm

Without lighting : 1200-1350 mm

### Wall attachment:

With dowels

Maximum moments 250 NM/Meter

